

14853-1H

919#5

Pulse Sequence: s2pu1

Solvent: CDC13

Temp. 25.0 C / 298.1 K

INOVA-500 "wormhole"

Pulse 45.3 degrees

Acq. time 3.500 sec

Width 8000.0 Hz

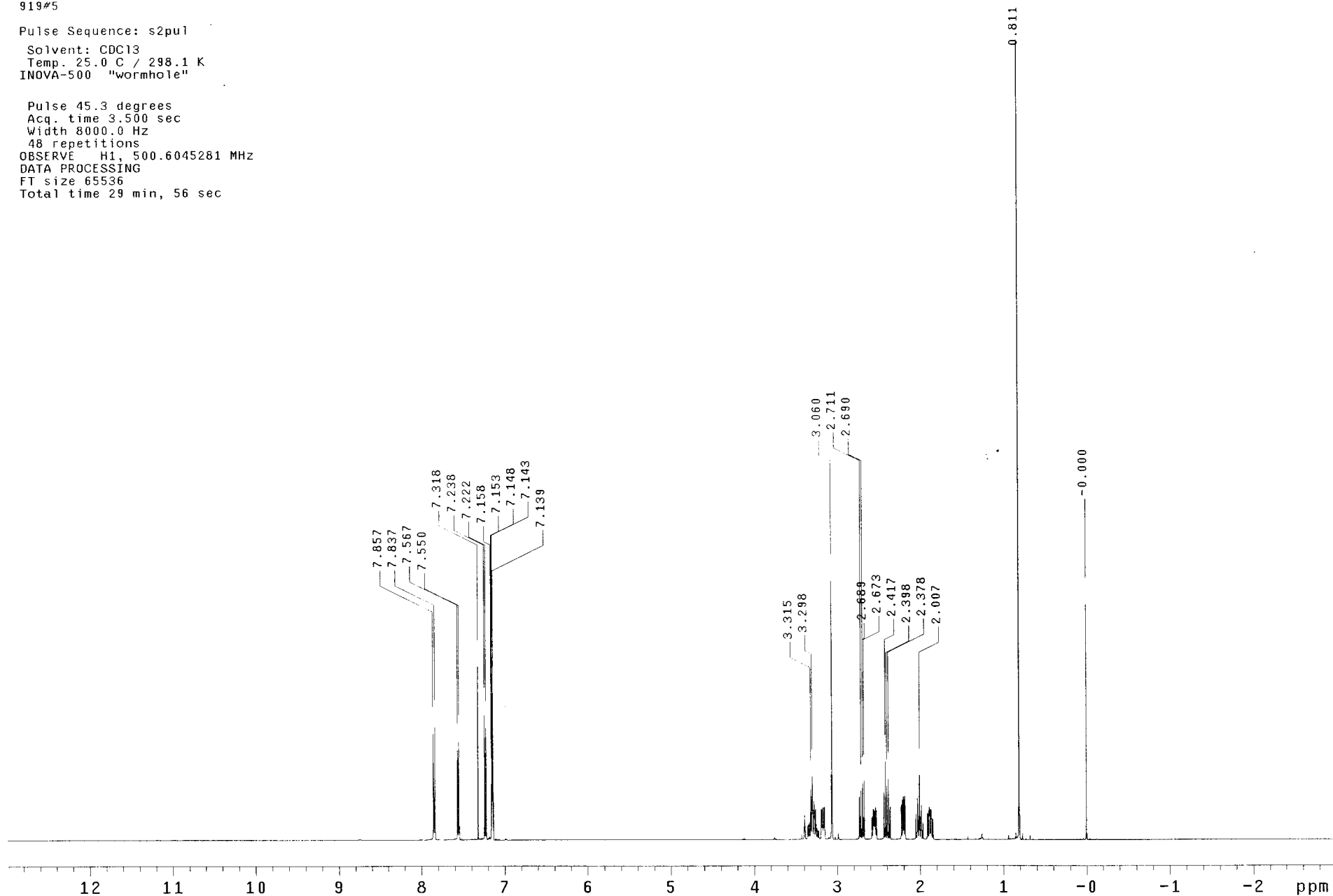
48 repetitions

OBSERVE H1, 500.6045281 MHz

DATA PROCESSING

FT size 65536

Total time 29 min, 56 sec

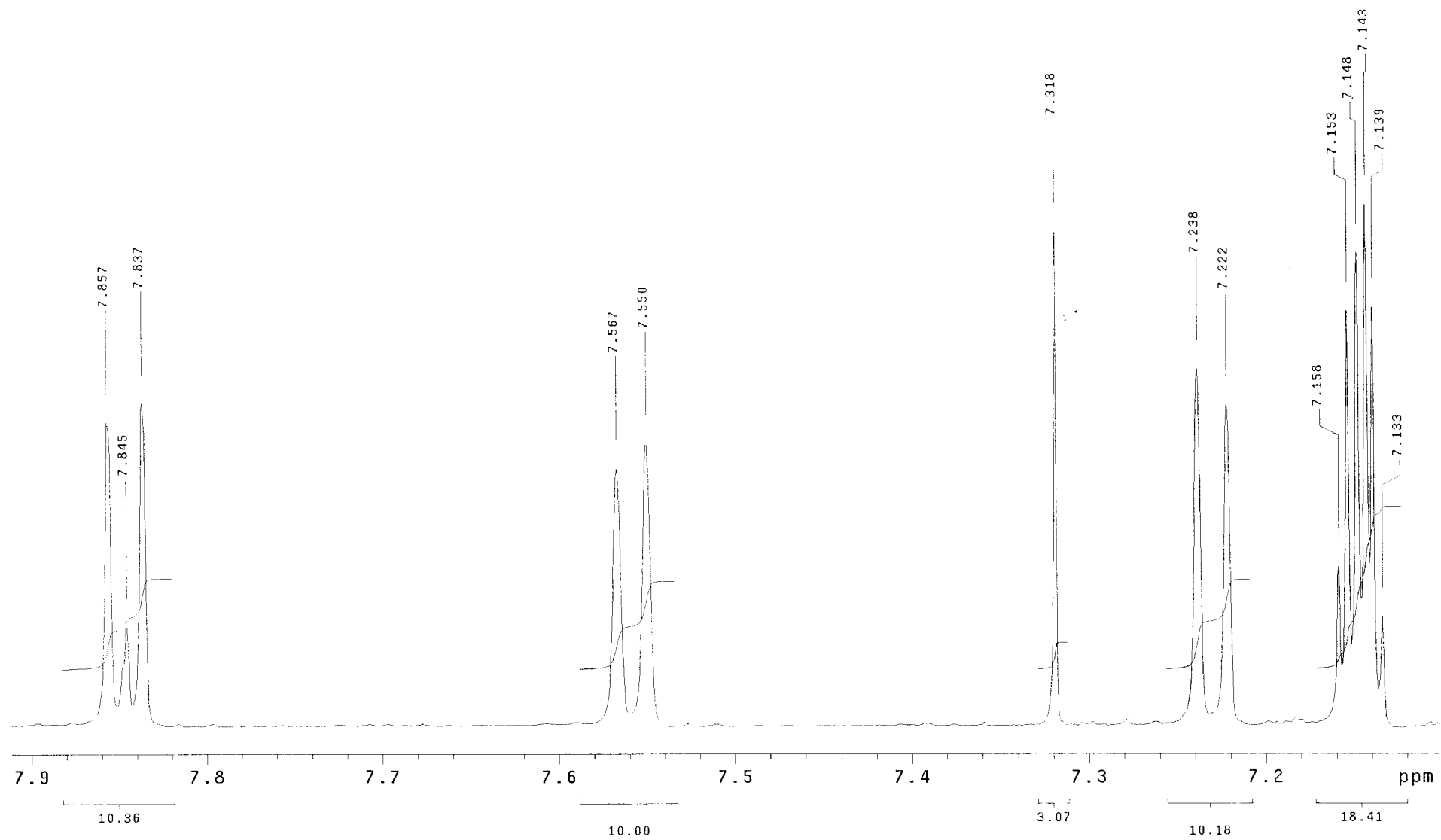


EQUULENIN B-919 LOT 131007

14853-1H

919#5

Pulse Sequence: s2pu1



14853-1H

919#5

Pulse Sequence: s2pu1

