

1891-1H
586-303-II

Current Data Parameters
NAME 1891
EXPNO 1
PROCNO 1

F2 - Acquisition Parameters
Date_ 20151116
PROBHD 5 mm CPPBBO BB
PULPROG zg30
SOLVENT CDC13
TE 298.1 K
SWH 10000.000 Hz
AQ 3.2767999 sec
NS 16
FIDRES 0.152588 Hz
D1 0 sec

==== CHANNEL f1 =====
SFO1 500.2030889 MHz
NUC1 1H
P1 11.30 usec
PLW1 13.69999981 W

F2 - Processing parameters
SI 65536
LB 0 Hz

10.093
10.087
8.344
8.341
8.329
8.326
8.317
8.316
8.300
8.299
8.098
8.095
7.937
7.924
7.923
7.284

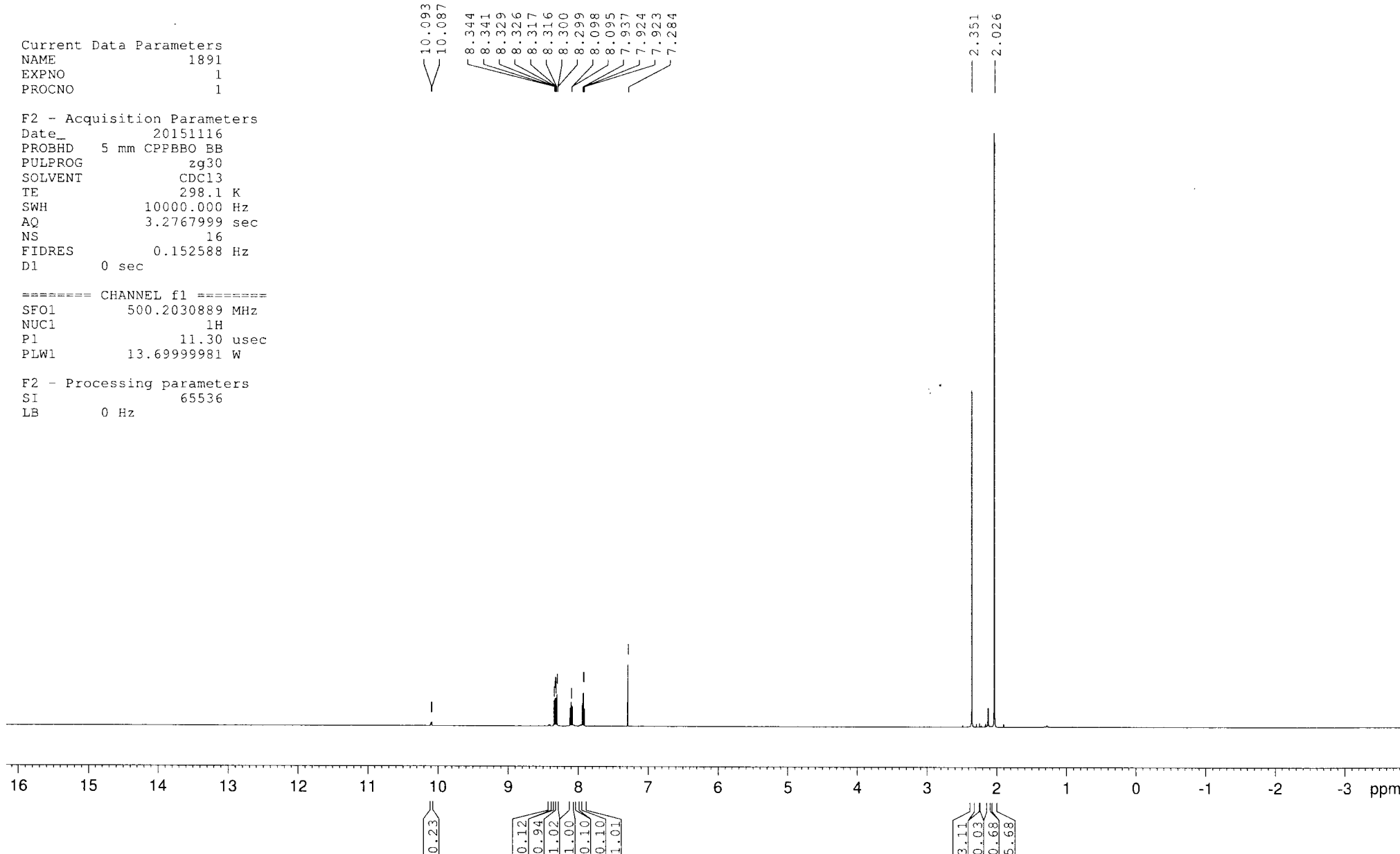
2.351
2.026

16 15 14 13 12 11 10 9 8 7 6 5 4 3 2 1 0 -1 -2 -3 ppm

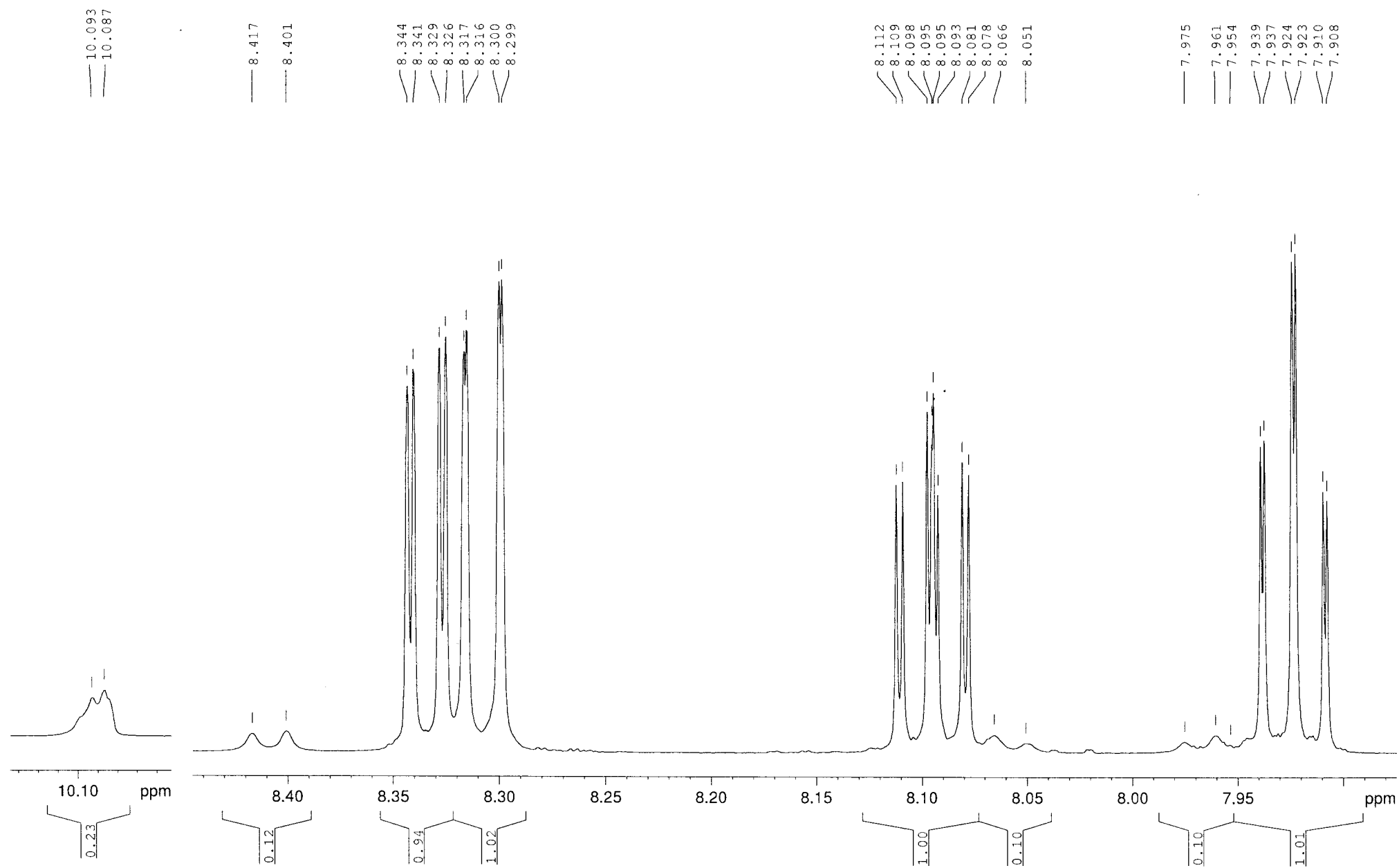
0.23

0.12
0.94
1.02
1.00
0.10
0.10
1.01

3.11
0.03
0.68
5.68



1891-1H
586-303-II



1891-1H
586-303-II

